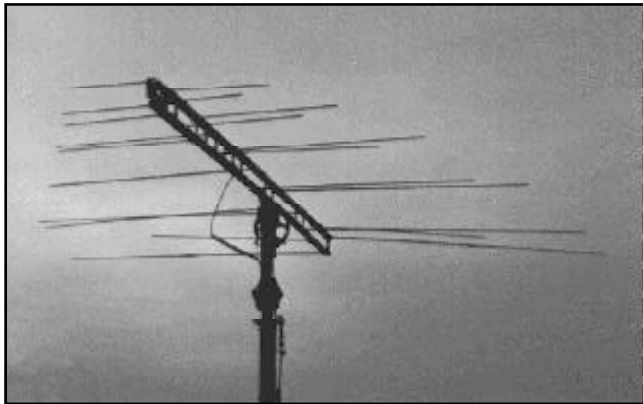
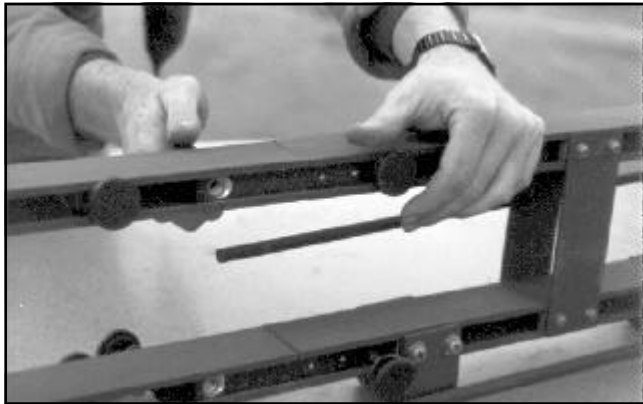


LP-102

- TRANSPORTABLE
- BROADBAND
- LINEAR POLARIZATION



Applications

The LP-102 is a tactical antenna suitable for ground-to-air or ground-to-ground communications over the 30 to 88 MHz band. The 1500 watt average and peak power rating also makes it suitable for directive jamming.

Features

The LP-102 weighs only 36 pounds, has no loose parts, and requires no tools for assembly. The radiating elements and all hardware are captivated to the support/feed boom. Knobs are used to hold the elements in their operational positions as well as their stored positions. The boom separates into two halves and the elements fold with a maximum storage length of 93 inches and store in a durable bag 8.5 inches square cross section. The antenna may be used in any polarization orientation. If the antenna is used as vertically polarized, the support mast must have the upper 8 ft isolated. Black oxide treatments and CARC finishing are utilized throughout. Non-corrosive materials are used exclusively, and there are no exposed dissimilar metal joints.

Characteristics

The LP-102 antenna has 30 to 88 MHz instantaneous bandwidth with a VSWR less than 2:1. The power handling capability is 1500 watts peak or average with adequate safety margins to accommodate environmental extremes. The gain is nominally 7.5 dBi across the band. The deployed length is 15 feet and the width is 15 feet, 4 inches. The input connector is a type "SC" jack.



SPECIFICATIONS

ELECTRICAL

Frequency Range	30-88 MHz
Gain	Nominally 7.5 dBi
Impedance	50 Ohms unbalanced
VSWR	2:1 max
Power Capability	1500 watts avg and peak
Connector	Type "SC"
Polarization	Vertical, Horizontal or Slant
E Plane Beamwidth	Nominally 65°
H Plane Beamwidth	Nominally 110°
Front to Back Ratio	12 dB minimum

MECHANICAL

Wind	75 mph wind, no ice
Temperature	-54°C to +71°C
Altitude	10,000 ft operating 40,000 ft storage
Shock (stored)	6 g's 11 ms ¹ / ₂ sine
Vibration (stored)	.5 g's from 5 Hz to 50 Hz 2 g's from 50 Hz to 300 Hz
Weight (Antenna only)	36 Lbs (16.3 kg)
(stored)	58 Lbs (26.2 kg)
Size (Deployed)	15 ft (4.6m) x 15.3 ft (4.7m)
(stored)	93 x 8.5 x 8.5 inches (2.36 x .22 x .22m)